



Think Vertical

# PARTS CATALOGUE





## About us

2M Lifts & Escalators pvt ltd was founded in 2005. 2M is a company specialized in R & D, production and sales of vertical elevator, escalator, movingwalk. The products cover passenger lift, home lift, bed lift, goods lift, explosive proof lifts, construction hoists, moving walks. Working closely with clients 2M seeks to create the most competitive products and customized solutions for clients. From the most affordable models to our most luxurious, each of our 2M elevator are made from the most from the finest materials and engineered for safe and environmentally friendly. With high quality products and good service, we always can gain good reputation and sincere Trust from our customers. The products of 2M have been exported to over 30 countries and regions



# Our Certification

EU-TYPE EXAMINATION CERTIFICATE		EU-TYPE EXAMINATION CERTIFICATE		EU-TYPE EXAMINATION CERTIFICATE	
According to Annex II, Part 2 of 2010/35/EU Directive		According to Annex II, Part 2 of 2010/35/EU Directive		According to Annex II, Part 2 of 2010/35/EU Directive	
<b>Certificate No.</b>	1-00000000	<b>Certificate No.</b>	1-00000000	<b>Certificate No.</b>	1-00000000
<b>Applicant</b>	ABC Company Ltd. 123 Main Street London, UK	<b>Applicant</b>	ABC Company Ltd. 123 Main Street London, UK	<b>Applicant</b>	ABC Company Ltd. 123 Main Street London, UK
<b>Product</b>	Pressure Vessel	<b>Product</b>	Pressure Vessel	<b>Product</b>	Pressure Vessel
<b>Technical File No.</b>	123456789	<b>Technical File No.</b>	123456789	<b>Technical File No.</b>	123456789
<b>Design</b>	Pressure Vessel	<b>Design</b>	Pressure Vessel	<b>Design</b>	Pressure Vessel
<b>Material</b>	Steel	<b>Material</b>	Steel	<b>Material</b>	Steel
<b>Pressure</b>	10 bar	<b>Pressure</b>	10 bar	<b>Pressure</b>	10 bar
<b>Volume</b>	1000 dm³	<b>Volume</b>	1000 dm³	<b>Volume</b>	1000 dm³
<b>Weight</b>	1000 kg	<b>Weight</b>	1000 kg	<b>Weight</b>	1000 kg
<b>Temperature</b>	20 °C	<b>Temperature</b>	20 °C	<b>Temperature</b>	20 °C
<b>Test Report</b>	1-00000000	<b>Test Report</b>	1-00000000	<b>Test Report</b>	1-00000000
<b>Examiner</b>	ABC Company Ltd.	<b>Examiner</b>	ABC Company Ltd.	<b>Examiner</b>	ABC Company Ltd.
<b>Date of Issue</b>	2020-01-01	<b>Date of Issue</b>	2020-01-01	<b>Date of Issue</b>	2020-01-01



## Table of Contents

### **SAFETY COMPONENTS**

OVER SPEED GOVERNOR (Ø300) WITH SWITCH	01
OVER SPEED GOVERNOR (Ø200) A3 COMPLIANT	02
ROPE TENSIONER	03
DOUBLE ROLLER INSTANTANEOUS SAFETY GEAR	04
SINGLE ROLLER INSTANTANEOUS SAFETY GEAR	06
SAFETY MECHANISM	07

### **CAR FRAME COMPONENTS**

ROPE ANCHORAGE SWIVEL TYPE	08
ROPE ANCHORAGE	10
ROPE EYE & BULLDOG CLIP	12
GUIDE SHOE	14
OILER & OIL COLLECTORS	21
DIVERTER PULLEY FOR CAR FRAME	22
DIVERTER PULLEY FOR MACHINE	23
PULLEY ACCESORIES	24

### **CABLE HANGER**

CABLE HANGER	26
--------------	----

### **BUFFERS**

SPRING BUFFER	28
---------------	----

### **ISOLATORS**

ISOLATORS	31
-----------	----

### **BRACKETS & ACCESSORIES**

ELEVATOR BRACKETS	33
BRACKET & ACCESSORIES	40
KEYS	41
RAIL CLIPS	42

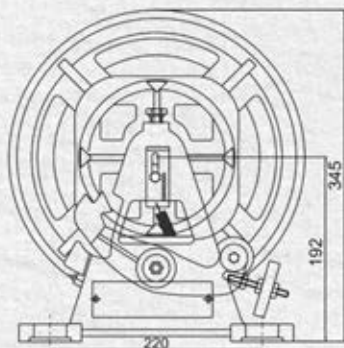


## Table of Contents

<b>MECHANICAL ACCESSORIES</b>	43
<b>ELECTRICAL ACCESSORIES</b>	50
<b>CONTROL PANEL ACCESSORIES</b>	54
<b>DECORATION ACCESSORIES</b>	58

## OVER SPEED GOVERNOR (Ø300) WITH SWITCH

CODE - SP00101



- Sheave Dia - 300mm
- Rope Dia - 6-8mm
- Action - Bi = directional

### AS PER EN NORMS

Code	Nominal speed max m/s	Electrical tripping speed m/s	Mechanical tripping speed m/s
SP001011	0.50	0.58	0.63
SP001012	0.63	0.72	0.79
SP001013	0.82	0.94	1.03
SP001014	1.00	1.15	1.25
SP001015	1.20	1.38	1.50
SP001016	1.50	1.73	1.88
SP001017	1.60	1.84	2.00
SP001018	1.80	2.07	2.25
SP001019	2.00	2.30	2.50

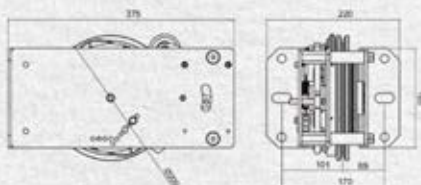
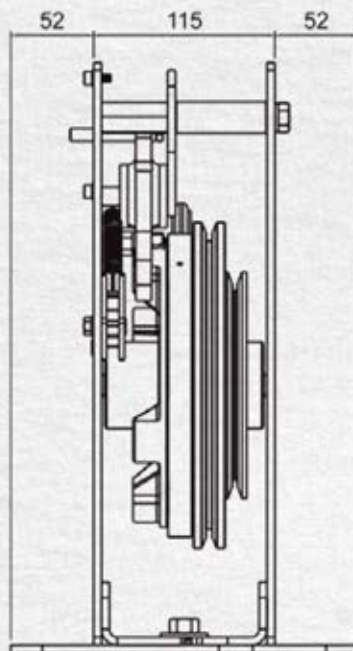
### AS PER IS NORMS

Code	Nominal speed max m/s	Electrical tripping speed m/s	Mechanical tripping speed m/s
SP001011_IS	0.50	0.63	0.70
SP001012_IS	0.63	0.79	0.88
SP001013_IS	0.82	1.03	1.15
SP001014_IS	1.00	1.25	1.40
SP001015_IS	1.20	1.50	1.68
SP001016_IS	1.50	1.88	2.10
SP001017_IS	1.60	2.00	2.24
SP001018_IS	1.80	2.25	2.52
SP001019_IS	2.00	2.50	2.80



# OVER SPEED GOVERNOR (Ø200) A3 COMPLIANT

**CODE - SP00182**



- Sheave Dia. - 200mm
- Rope Dia. - 6-8mm
- Action - Bi-directional
- A3 Norm Compliant to avoid
- unintended car movement

## AS PER EN NORM

Code	Nominal speed max m/s	Electrical tripping speed m/s	Mechanical tripping speed m/s
SP00182 1	1.00	1.15	1.25
SP00182 2	1.20	1.38	1.50
SP00182 3	1.50	1.73	1.88

## AS PER EN NORM

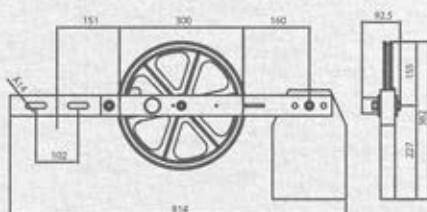
Code	Nominal speed max m/s	Electrical tripping speed m/s	Mechanical tripping speed m/s
SP00182 1_IS	1.00	1.25	1.40
SP00182 2_IS	1.20	1.50	1.68
SP00182 3_IS	1.50	1.88	2.10

# ROPE TENSIONER

CODE - SP00101



- Pulley Dia. - 300mm/200mm
- Rope Dia. - 6-8mm
- Available with switch to control rope stretch



Rope Tensioner without guard

Code	Type of Wt.	Dead Wt. (Kgs.)
SP00101_C10	Casting	10 Kgs
SP00101_C20	Casting	20 Kgs
SP00101_F10	Filler	10 Kgs
SP00101_F15	Filler	15 Kgs
SP00101_C10	Casting	10 Kgs
SP00101_C20	Casting	20 Kgs
SP00101_F10	Filler	10 Kgs
SP00101_F15	Filler	15 Kg



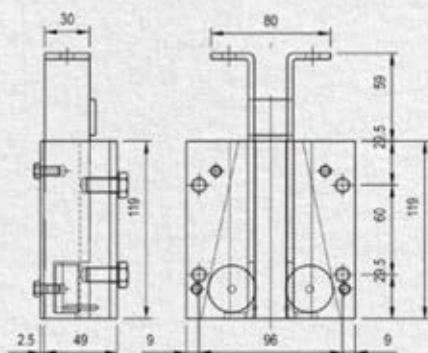
# DOUBLE ROLLER INSTANTANEOUS SAFETY GEAR

**CODE - SP00053**



Action - Instantaneous  
For Capacity - Upto 1 Tonne

For Speed - Upto 1.0 m/s  
For Rail Size - 9mm, 10mm, 16mm



CODE	TYPE	RAILS	MAX NORMAL SPEED
SP00053	sp50	6 to 16 mm	0.60 m/s

TRIPPING SPEED	HOLES	MASS KG	MATERIAL
1 m/s	REAR M10	4.0	C 40
Max load on two devices at different release speed		0.06 m/s	3128 kgs
		0.80 m/s	2853 kgs



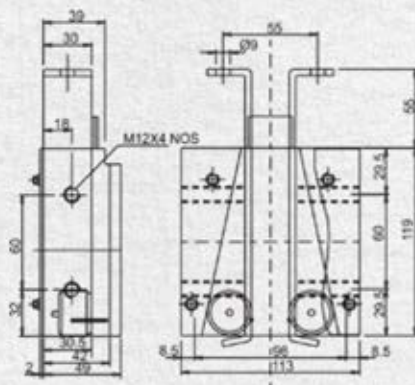
## DOUBLE ROLLER INSTANTANEOUS SAFETY GEAR

CODE - SP00054



Action - Instantaneous  
For Capacity - Upto 1 Tonne

For Speed - Upto 1.0 m/s  
For Rail Size - 9mm, 10mm, 16mm

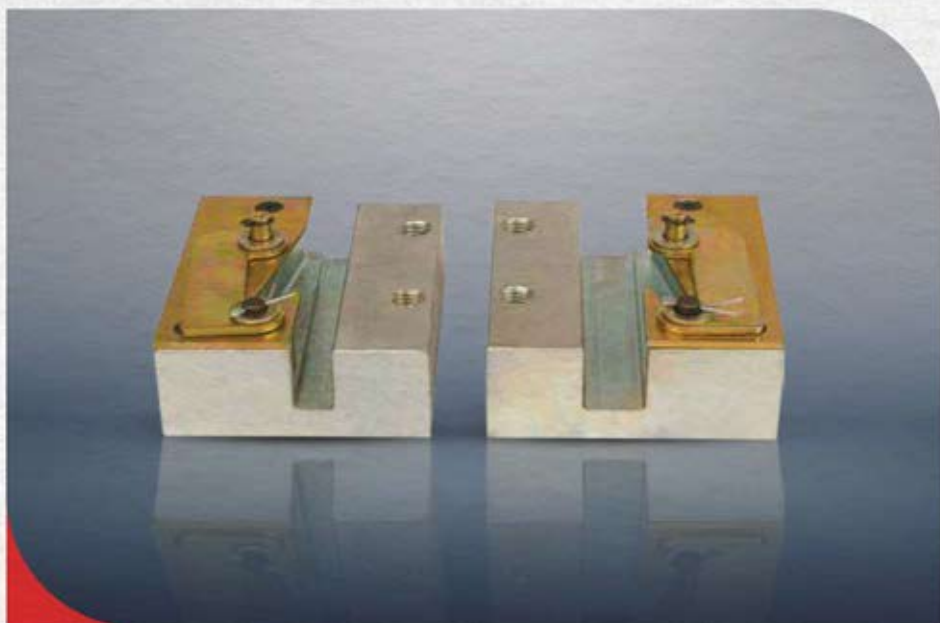


CODE	TYPE	RAILS	MAX NORMAL SPEED
SP00054	sp50	6 to 16 mm	0.60 m/s

TRIPPING SPEED	HOLES	MASS KG	MATERIAL
1 m/s	SIDE M12	4.0	C 40
Max load on two devices at different release speed		0.06 m/s	3128 kgs
		0.80 m/s	2853 kgs

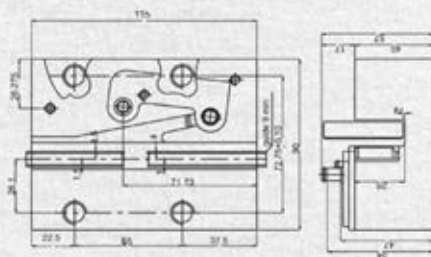
# SINGLE ROLLER INSTANTANEOUS SAFETY GEAR

**CODE - SP00183**



Action - Instantaneous  
For Capacity - Upto 8 Passenger

For Speed - Upto 1.0 m/s  
For Rail Size - 9mm, 10mm, 16mm

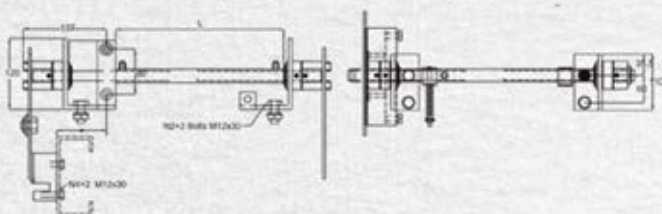


CODE	RAILS	MAX NORMAL SPEED	MAX GOVERNOR INTERVENTION SPEED
SP00183	8 & 9/16 mm	0.6m/s - 1m/s	1.0m/s - 1.10m/s
CODE	MATERIAL		WIDE RAIL PROCESSING
REAR M10	C 5		OILED / DRY

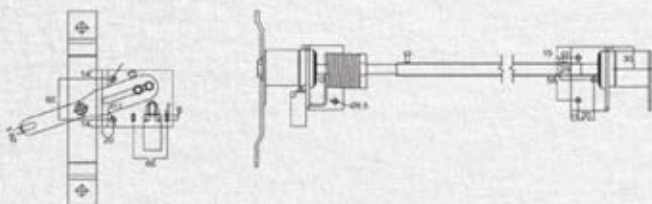


## SAFETY MECHANISM

CODE - SP00184

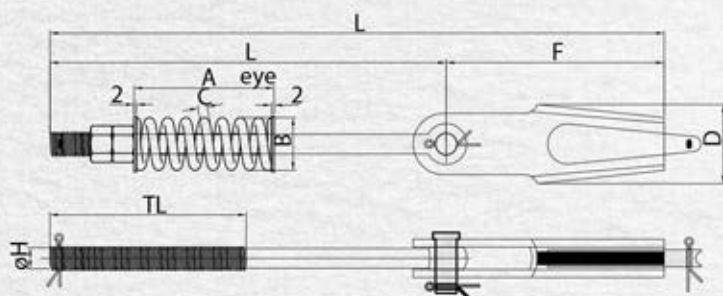


CODE - SP00184



# ROPE ANCHORAGE SWIVEL TYPE

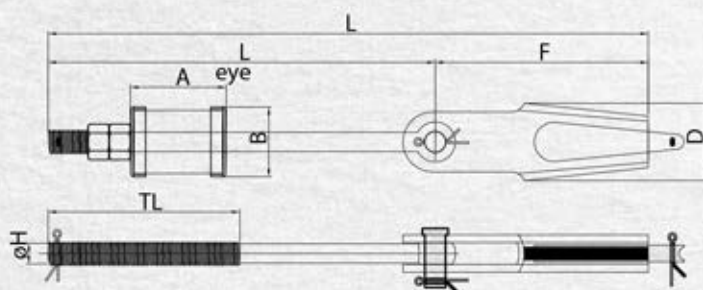
CODE - SP00108



CODE	ROPE Ø mm	Ø D	L eye	L mm	F	TL mm	A	B	C	D	MIN STRENGTH KN
SP00108 1	6 - 8	M12	300	430	130	150	110	32	6.5	50	29.4
	6 - 8	M12	500	630	130	150	110	32	6.5	50	29.4
SP00108 2	9 - 11	M16	300	465	165	150	102	40	7	60	56.5
	9 - 11	M16	500	665	165	150	102	40	7	60	56.5
SP00108 3	12 - 14	M20	300	500	200	150	156	50	9	75	78.9
	12 - 14	M20	500	700	200	150	156	50	9	75	78.9
SP00108 4	5 - 6.5	M10	180	265	85	75	68	24	4	36	22.7



## ROPE ANCHORAGE SWIVEL TYPE

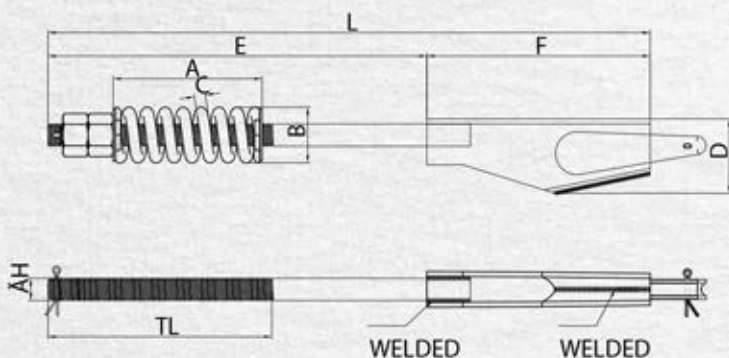
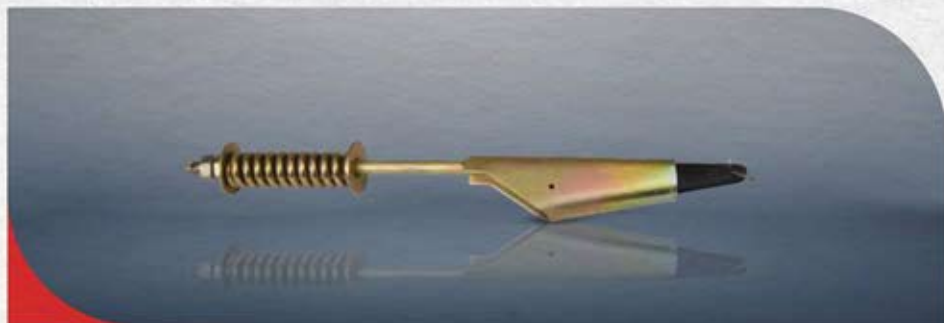
**CODE - SP00106**

CODE	ROPE Ø mm	Ø D	L eye	L mm	F	TL mm	A	B	C	D	MIN STRENGTH kN
SP00106 1	6 - 8	M12	300	430	130	150	73.5	54	6.5	50	29.4
	6 - 8	M12	500	630	130	150	73.5	54	6.5	50	29.4
SP00106 2	9 - 11	M16	300	465	165	150	73.5	54	7	60	56.5
	9 - 11	M16	500	665	165	150	73.5	54	7	60	56.5
SP00106 3	12 - 14	M20	300	500	200	150	73.5	54	9	75	78.9
	12 - 14	M20	500	700	200	150	73.5	54	9	75	78.9
SP00106 4	5 - 6.5	M10	180	266	85	75	64	41	4	36	22.7



# ROPE ANCHORAGE

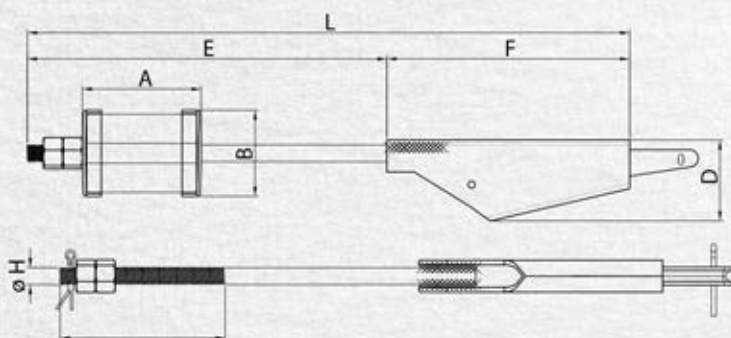
CODE - SP00185



CODE	ROPE Ø mm	Ø H	L mm	TL mm	A	B	C	D	E	F	MIN STRENGTH KN
SP00185 1	6 - 8	M12	375	105	110	32	6.5	50	225	150	40
SP00185 2	9 - 11	M16	455	110	121	40	9	55	260	195	75
SP00185 3	12 - 14	M20	480	200	156	50	9	60	300	180	85

# ROPE ANCHORAGE

CODE - SP00186



CODE	ROPE Ø mm	ØH	L mm	TL mm	A	B	C	D	E	F	MIN STRENGTH KN
SP00186 1	6 - 8	M12	375	105	73.5	54	50	225	150	40	40
SP00186 2	9 - 11	M16	455	110	73.5	54	55	260	195	75	75
SP00186 3	12 - 14	M20	480	200	73.5	54	60	300	180	85	85



## ROPE EYE & BULLDOG CLIP

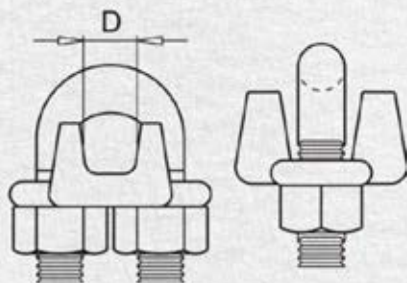
CODE - SP00062



Finish Available

• White Zinc Plated

• Yellow Zinc Plated



CODE	ROPE D.mm	TIGHTENING TOURQUE Nm
SP00062 1	5 - 6	4,24
SP00062 2	7 - 8	4,24
SP00062 3	9 - 10	10,20
SP00062 4	12 - 13	20,11
SP00062 5	15 - 16	20,11



## ROPE EYE & BULLDOG CLIP

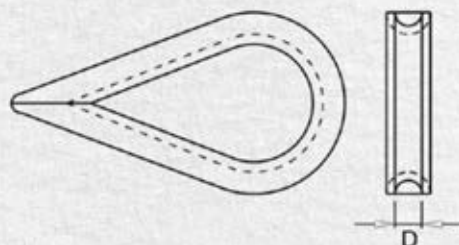
CODE - SP00063



### Finish Available

• White Zinc Plated

• Yellow Zinc Plated

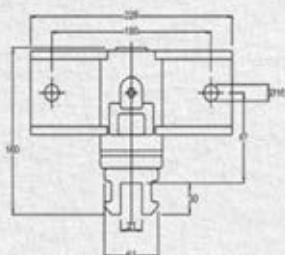
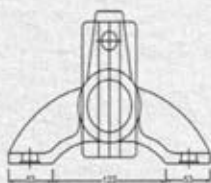


CODE	ROPE D.mm
SP00063 1	3 - 4
SP00063 2	5 - 6
SP00063 3	7 - 8
SP00063 4	9 - 10
SP00063 5	11 - 12
SP00063 6	13 - 14



## GUIDE SHOE

CODE - SP00180



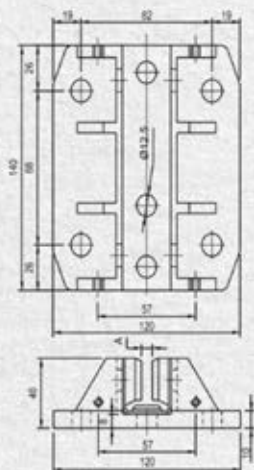
For Capacity - Upto 1.5 Tonne  
For Speed - Upto 0.6 m/s  
For Rail Size - 16mm

Rail Size	Load daN	Type
For 16 mm	2500	ROCKING T600



## GUIDE SHOE

CODE - PAR00148

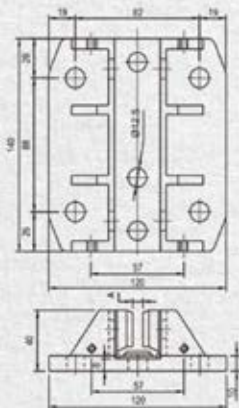


For Capacity - Upto 8 Passenger  
 For Speed - Upto 0.85 m/s  
 For Rail Size - 5, 6, 9, 10, 16mm\*

Rail Size	Load daN	Type
From 5 to 16mm	1350	C. I.

## Think Vertical

**CODE - SP00082**



For Capacity - Upto 8 Passenger

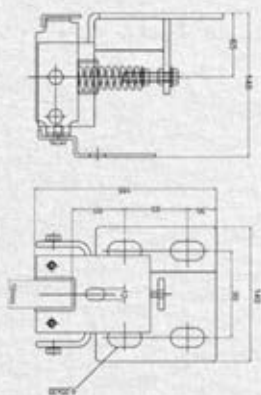
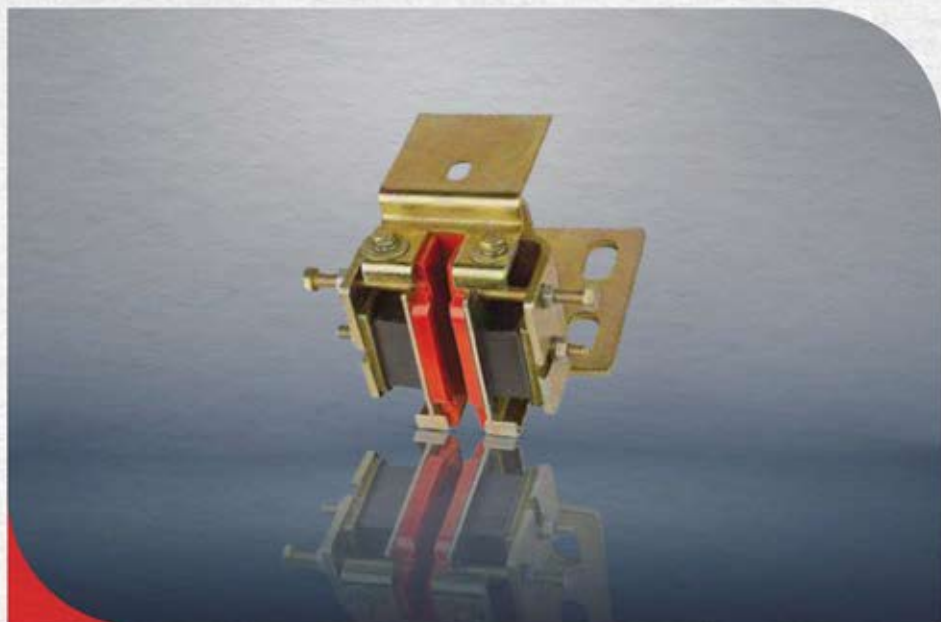
For Speed - Upto 0.85 m/s

For Rail Size - 5, 6, 9, 10, 16mm

Rail Size	Load daN	Type
From 5 to 18mm	1000	C.I.

## GUIDE SHOE

CODE - SP00013



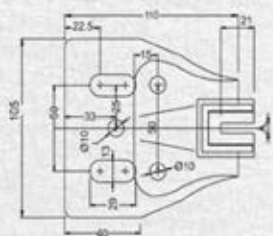
For Capacity - Upto 20 Passenger  
For Speed - Upto 1.75 m/s  
For Rail Size - 9mm, 10mm, 16mm

Rated Speed	Rail Size
UPTO 1.75 M/S	From 9 to 16mm
Load daN	Type
2350	Sliding High Speed



## GUIDE SHOE

CODE - SP00080

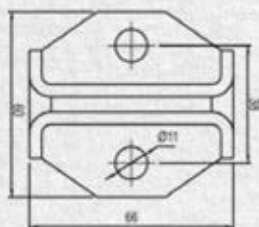
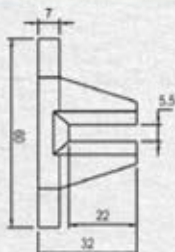


For Capacity - Upto 8 Passenger  
For Speed - Upto 1.0 m/s  
For Rail Size - 5mm, 6mm

Rail Size	Load daN	Type
For 16 mm	2500	ROCKING T600

## GUIDE SHOE

CODE - SP00080



- For Capacity - Upto 8 Passenger
- For Speed - Upto 0.85m/s
- For Rail Size - 5mm, 6mm

NYLON GUIDE SHOE  
WITH METAL SUPPORT

Rail Size	Load daN	Type
From 5 to 6mm	1000	Nylon

## OILER & OIL COLLECTORS

CODE - SP00097



Oil Feeder Suitable

CODE - SP00097

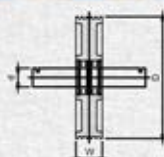


Oil Collector for rail size 5, 9, 14 & 16



# DIVERTER PULLEY FOR CAR FRAME

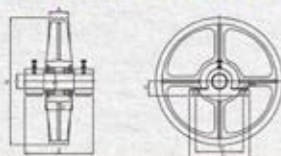
CODE - SP00015



Code	Pulley Dia. D	Rope Dia.	No. of ropes	Pitch P	Width W	Shaft Dia. d	Ball Bearing
SP00015 1	250	6	5	12	54	50	6210-ZZ
SP00015 2	250	6	6	12	64	50	6210-ZZ
SP00015 3	250	6	7	12	116	50	6210-ZZ
SP00015 4	250	6	8	12	116	50	6210-ZZ
SP00015 5	300	8	4	12	70	50	6210-ZZ
SP00015 6	300	8	5	12	70	50	6210-ZZ
SP00015 7	300	8	6	12	83	50	6210-ZZ
SP00015 8	300	10	3	17	70	50	6210-ZZ
SP00015 9	300	10	4	17	83	50	6210-ZZ
SP00015 10	300	10	5	17	102	50	6210-ZZ
SP00015 11	300	13	3	19	70	50	6210-ZZ
SP00015 12	300	13	4	19	83	50	6210-ZZ
SP00015 13	320	6	5	12	70	55	6211-ZZ
SP00015 14	320	6	6	12	86	55	6211-ZZ
SP00015 15	320	6	7	12	106	55	6211-ZZ
SP00015 16	320	6	8	12	130	55	6211-ZZ
SP00015 17	320	8	4	12	70	55	6211-ZZ
SP00015 18	320	8	5	12	70	55	6211-ZZ
SP00015 19	320	8	6	12	86	55	6211-ZZ
SP00015 20	400	8	4	12	70	55	6211-ZZ
SP00015 21	400	8	5	12	70	55	6211-ZZ
SP00015 22	400	8	6	12	84	55	6211-ZZ
SP00015 23	400	8	8	12	102	55	6211-ZZ
SP00015 24	400	10	3	17	70	55	6211-ZZ
SP00015 25	400	10	4	17	84	55	6211-ZZ
SP00015 26	400	10	5	17	102	55	6211-ZZ
SP00015 27	400	13	3	19	70	55	6211-ZZ
SP00015 28	400	13	4	19	84	55	6211-ZZ
SP00015 29	400	13	5	19	102	55	6211-ZZ
SP00015 30	525	8	6	12	102	55	6211-ZZ
SP00015 31	525	8	8	12	108	55	6211-ZZ
SP00015 32	525	10	3	17	102	55	6211-ZZ
SP00015 33	525	10	4	17	102	55	6211-ZZ
SP00015 34	525	10	5	17	102	55	6211-ZZ
SP00015 35	525	13	3	19	102	55	6211-ZZ
SP00015 36	525	13	4	19	102	55	6211-ZZ
SP00015 37	525	13	5	19	130	55	6211-ZZ
SP00015 38	525	13	6	19	130	55	6211-ZZ

# DIVERTER PULLEY FOR CAR FRAME

CODE - SP00015

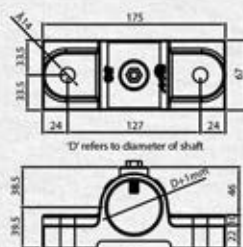


CODE	ØP	ØROPE	ROPE DIA"mm"	A	C	L	V	Z	d	h	R	WAVE LOAD(N)	WAVE BEARING
SP00015 1	360	4	9-11	82	128	175	85	300	50	45	55	2000	6210-ZZ
SP00015 2	400	4	9-11	85	130	175	85	300	50	45	55	2500	6210-ZZ
SP00015 3	400	5	9-11	100	128	175	85	300	50	45	55	3300	6210-ZZ
SP00015 4	450	5	9-11/ 12-14	100	128	175	85	300	50	45	55	3300	6210-ZZ
SP00015 5	525	6	9-11/ 12-14	133	135	185	133	300	95	48	60	6300	6211-ZZ
SP00015 6	550	7	9-11	130	128	175	122	300	55	48	60	6300	6211-ZZ
SP00015 7	480	5	12-14	101	135	175	88	300	50	45	55	3300	6210-ZZ
SP00015 8	480	6	12-14	134	135	175	124	300	50	45	55	3300	6210-ZZ
SP00015 9	400	6	9-11/ 12-14	101	128	175	86	300	50	45	55	3300	6210-ZZ
SP00015 10	200	4	9-11	82	125	174	53	300	45	49	45	1800	6209-ZZ
SP00015 11	300	3	10-13	85	128	175	85	300	50	45	55	2000	6210-ZZ
SP00015 12	300	4	10-13	85	128	175	85	300	50	45	55	2000	6210-ZZ
SP00015 13	400	3	9-11/ 12-14	85	128	175	85	300	50	45	45	2500	6210-ZZ
SP00015 14	200	2	9-11	50	128	174	53	300	45	49	45	1800	6209-ZZ
SP00015 15	200	5	9-11	82	128	174	53	300	45	49	45	1800	6209-ZZ
SP00015 16	200	6	9-11	82	128	174	53	300	45	49	45	1800	6209-ZZ
SP00015 17	250	4	9-11	85	128	174	53	300	45	49	45	1800	6209-ZZ
SP00015 18	250	5	9-11	85	128	174	53	300	45	49	45	1800	6209-ZZ
SP00015 19	300	5	9-11	100	128	175	85	300	50	45	55	2000	6210-ZZ
SP00015 20	320	8	9-11	100	128	175	85	300	50	45	55	2000	6210-ZZ
SP00015 21	360	5	9-11	107	128	175	85	300	50	45	55	2000	6210-ZZ
SP00015 22	400	7	9-11/ 12-14	135	128	175	85	300	50	45	55	3300	6210-ZZ
SP00015 23	450	4	9-11	135	128	175	85	300	50	45	55	3300	6210-ZZ
SP00015 24	450	7	9-11/ 12-14	135	128	175	85	300	50	45	55	3300	6210-ZZ
SP00015 25	525	3	12-14	100	135	175	124	300	95	48	60	6300	6211-ZZ
SP00015 26	525	4	12-14	100	135	175	124	300	95	48	60	6300	6211-ZZ
SP00015 27	525	5	12-14	100	135	175	124	300	95	48	60	6300	6211-ZZ
SP00015 28	250	6	9-11	82	128	174	53	300	45	49	45	1800	6209-ZZ
SP00015 29	250	8	9-11	100	128	174	53	300	45	49	45	1800	6209-ZZ
SP00015 30	320	4	9-11	85	128	175	85	300	50	45	55	2000	6210-ZZ
SP00015 31	360	6	9-11	82	128	175	85	300	50	45	55	2000	6210-ZZ
SP00015 32	320	5	9-11	100	128	175	85	300	50	45	55	2000	6210-ZZ
SP00015 33	210	5	9-11	85	128	174	53	300	45	49	45	1800	6209-ZZ
SP00015 34	240	6	9-11	85	128	174	53	300	45	49	45	1800	6209-ZZ
SP00015 35	240	8	9-11	85	128	174	53	300	45	49	45	1800	6209-ZZ
SP00015 36	240	10	9-11	85	128 Ø	174	53	300	45	49	45	1800	6209-ZZ

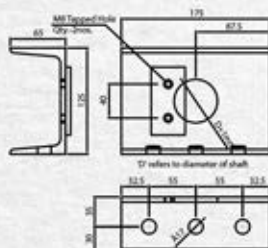
## PULLEY ACCESSORIES

### PEDESTAL

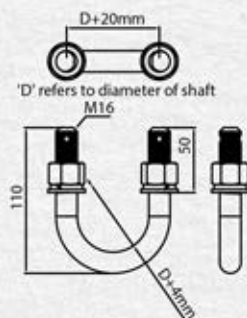
#### CASTING PEDESTAL



#### FABRICATED PEDESTAL



#### U - BOLT

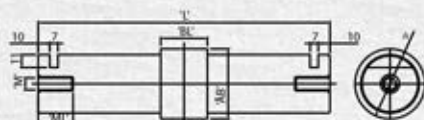




## PULLEY ACCESSORIES

### PEDESTAL

#### SHAFT WITH CENTRE LOCKING PULLEY ARRANGEMENT



D, B, BL, L, M, ML customised as per needs

#### SHAFT WITH PROVISION FOR LOCK PLATE



D, L, M, ML customised as per needs

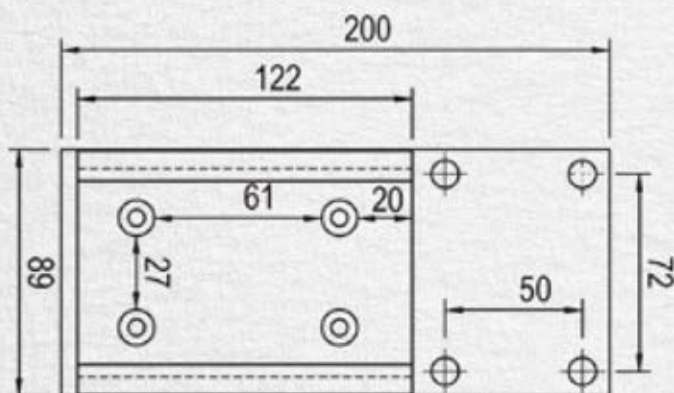
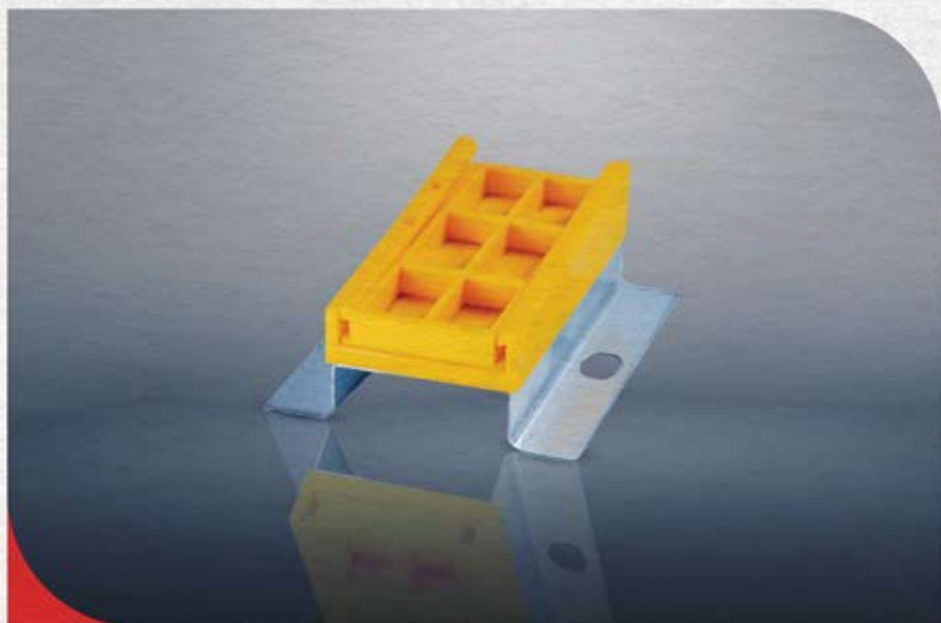
#### SHAFT WITH PROVISION FOR U BOLT CLAMPING



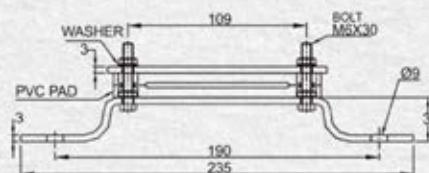
D, L, X, M, ML customised as per needs

## CABLE HANGER

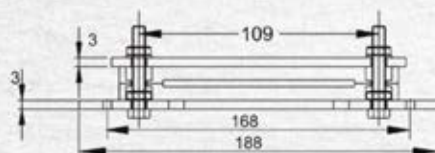
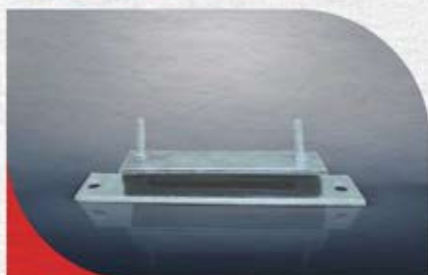
CODE - TP00048



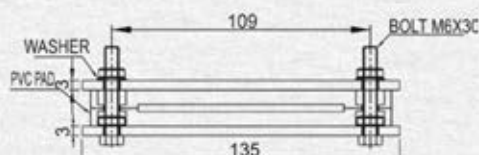
**CODE - TP00002 1**



**CODE - TP00002 2**



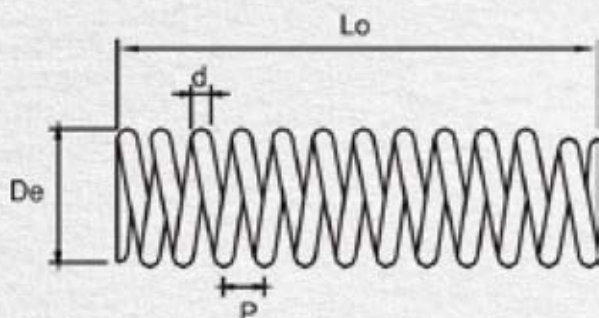
**CODE - TP00002 3**





# SPRING BUFFERS

CODE - SP00038



TECHNICAL DATA	LENGTH Lo - mm	WIRE DIA d - mm	OUTSIDE DIA De - mm	MIDDLE DIA Dm - mm	PITCH P - mm	ACTIVE TURNS It =	TOTAL TURNS It =	TOTAL COMPRESSIVE LOAD F - daN
SP00038 14	235	14	85	71	23.26	9.50	10.50	828
SP00038 14/320	320	14	94	80	26.61	11.50	13.00	928
SP0003815	210	15	89	74	26	7.50	8.50	1165
SP00038 15/330	330	15	94	79	30	10.50	12.00	1360
SP00038 16	320	16	112	96	38	20	10	1560
SP00038 18	250	18	98	80	29	8.00	9.00	1851
SP00038 18/20	420	18	98	80	29.78	13.50	15.00	2007



## SPRING BUFFERS

### HYDRAULIC BUFFER CODE - SP00022

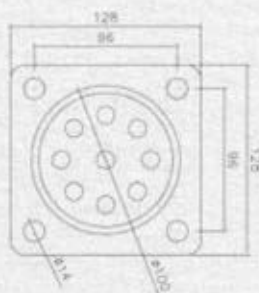
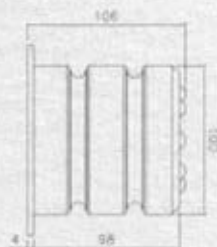


Min. Stroke	- 173.7
Max. open height	- 485.6
Nominal oil volume	- 0.9LITRES
Buffer mass/ no oil	- 6.7KG

### POLYTHENE BUFFER CODE - SP00065

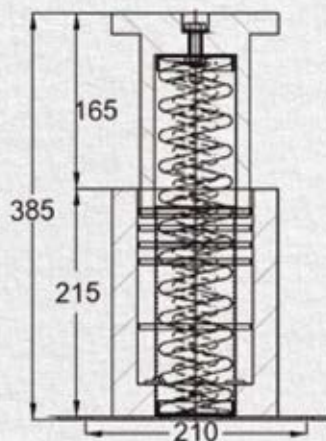
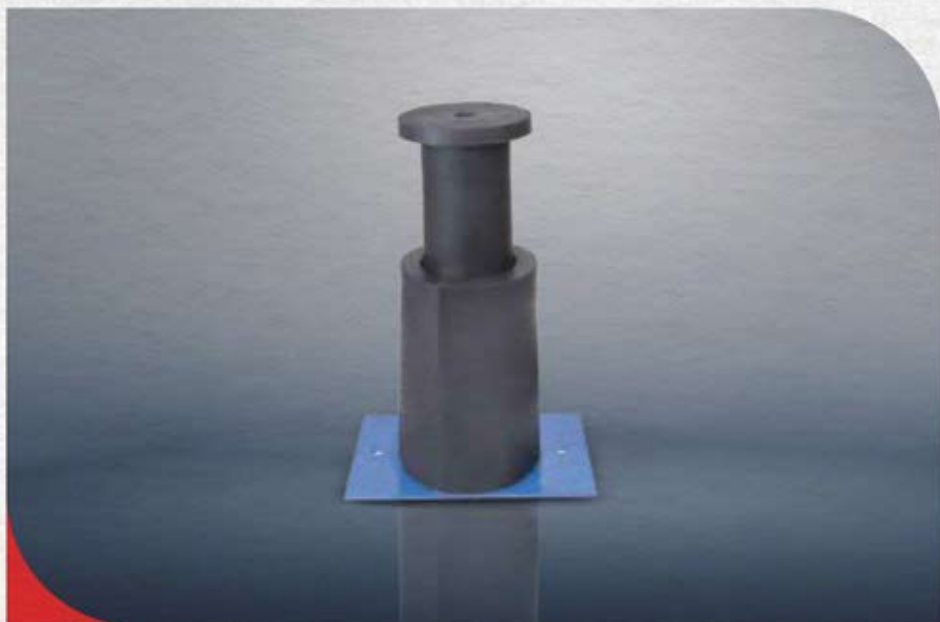


Speed $\leq 1,00$ m/s	$\leq 1,00$ m/s
Load 450Kg - 2200Kg	- 2200Kg
Height = 115 mm	= 115 mm
Diameter = 95 mm	= 95 mm



## SPRING BUFFERS

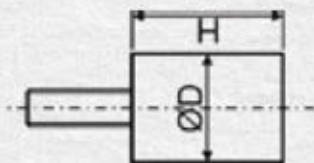
### DOUBLE ACTION RUBBER BUFFER



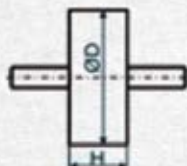
Code	Speed m/s
2MC-4S	0,63
Impact Force N	Buffer Stroke (Single Buffer)mm
21140	110



## ISOLATORS



CODE	HARDNESS	D mm	H mm	PIN	STROKE Y mm	LOAD daN
2MC-A3	sh65	56	38	M10x23x23	280	3.8
2MC-A6	sh65	75	30	M12x28x23	455	3.5



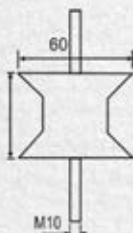
CODE	HARDNESS	D mm	H mm	PIN	STROKE Y mm	LOAD daN
2MC-A3	sh65	56	38	M10x23x23	280	3.8

## STEADIER BUFFER

### CODE -2MC033



FOR LOWER CAR  
FRAME BUFFER

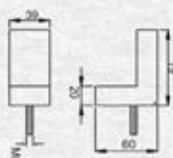


M10 HARDNESS sh55

### CODE -2MC034



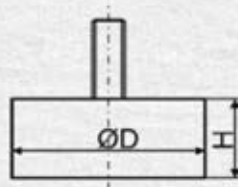
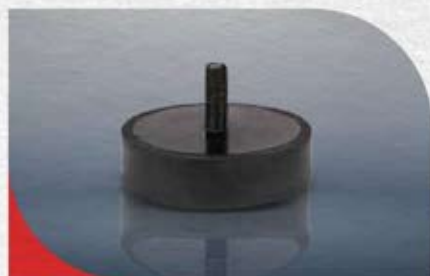
FOR UPPER CAR  
FRAME BUFFER



M8 HARDNESS sh55

# ISOLATORS

## MACHINE BASE RUBBER



CODE	HARDNESS	D mm	H mm	PIN	STROKE Y mm	LOAD daN
2MC- H	sh65	110	29	M14x37	1000	7
2MC- N	sh65	100	50	M14x55	1000	7

### 2MC035

Base rubber with 2 hole  
L-140 x B-75 x Thk - 25



Load daN 1000 for bed plates

### 2MC036

Base rubber  
L-150 x B-108 x Thk - 28



Load daN 1000 for bed plates

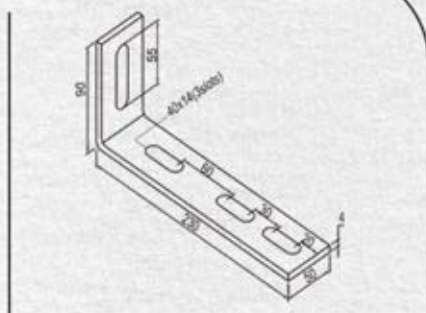
### 2MC037

Base rubber with 1 hole  
L-75 x B-75 x Thk - 24

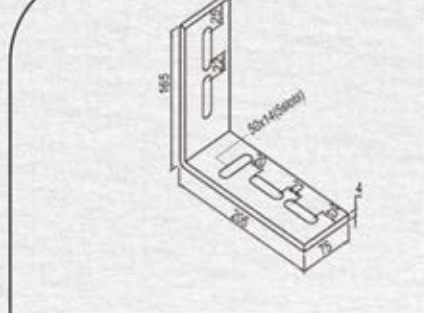


# ELEVATOR BRACKETS

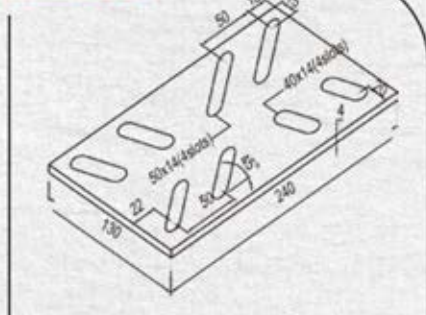
**2MC038**



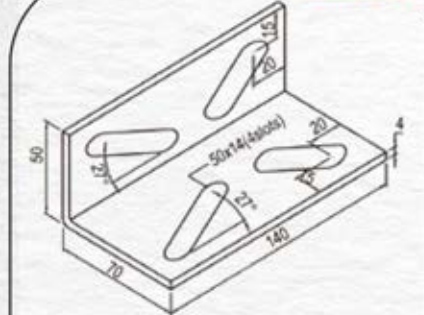
**2MC039**



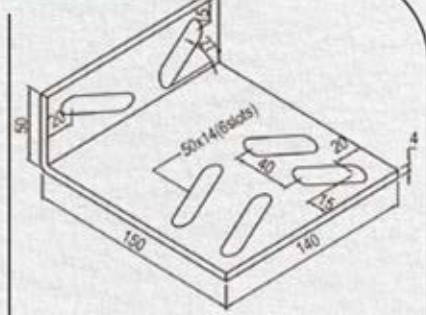
**2MC040**



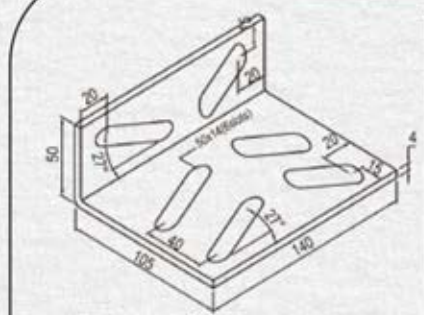
**2MC041**



**2MC042**



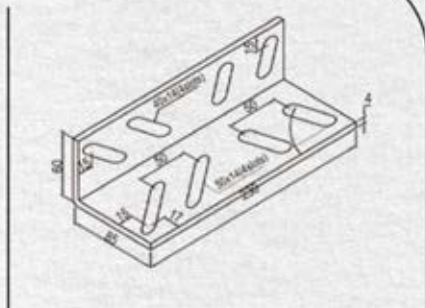
**2MC043**



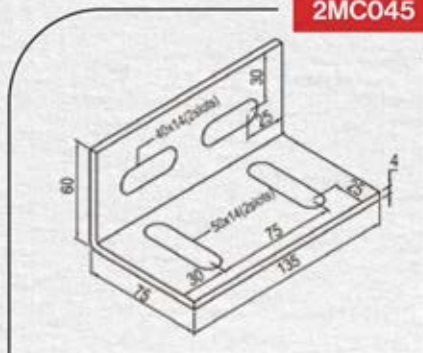


## ELEVATOR BRACKETS

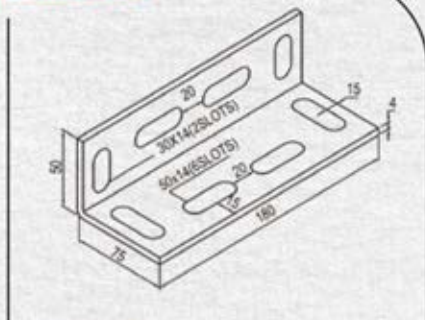
**2MC044**



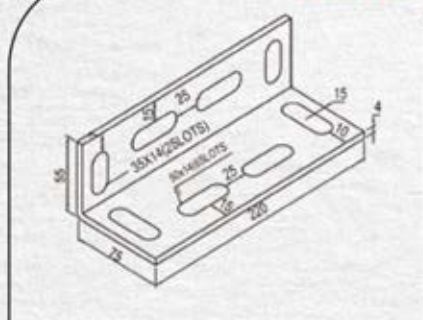
**2MC045**



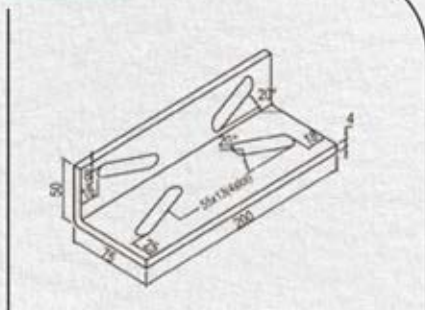
**2MC046**



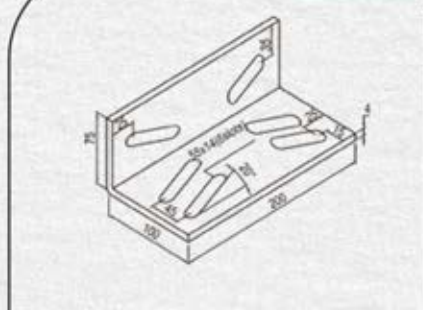
**2MC047**



**2MC048**

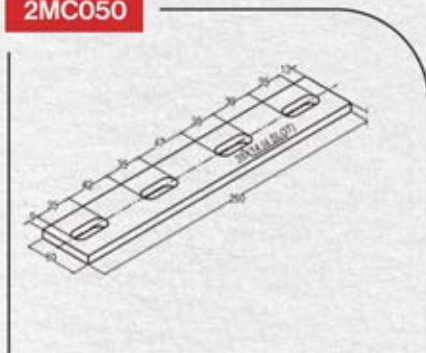


**2MC049**

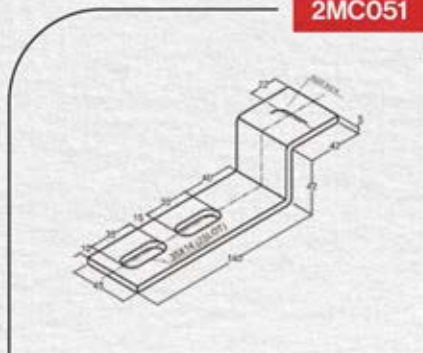


## ELEVATOR BRACKETS

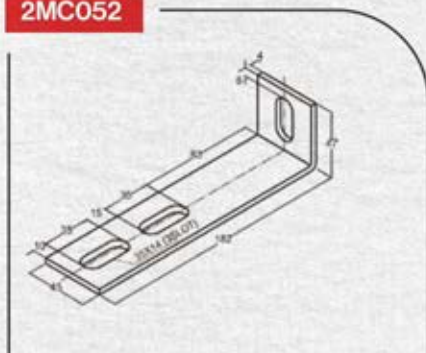
**2MC050**



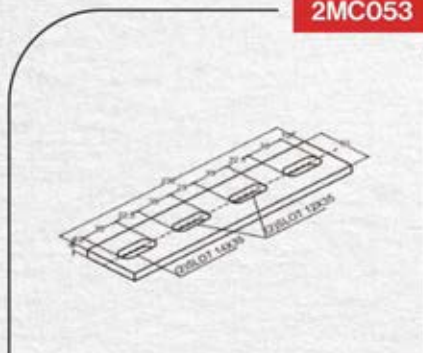
**2MC051**



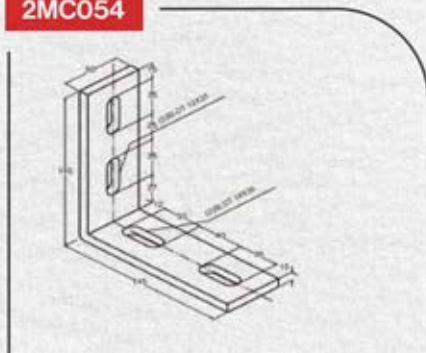
**2MC052**



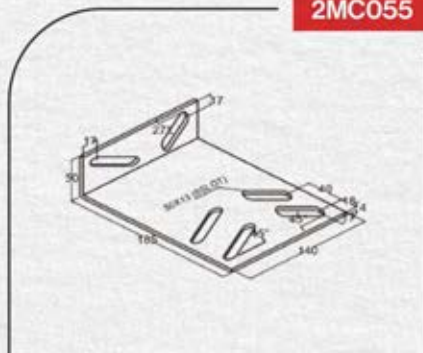
**2MC053**



**2MC054**

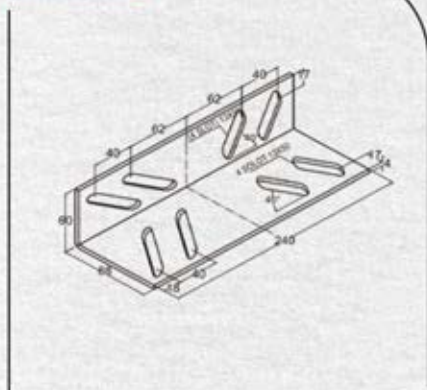


**2MC055**

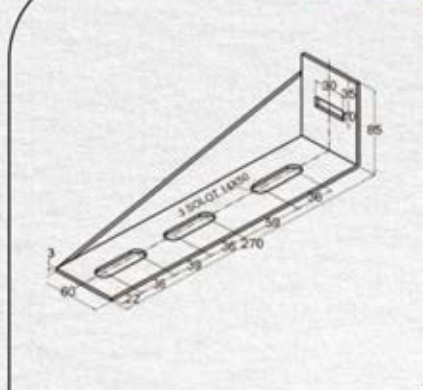


## ELEVATOR BRACKETS

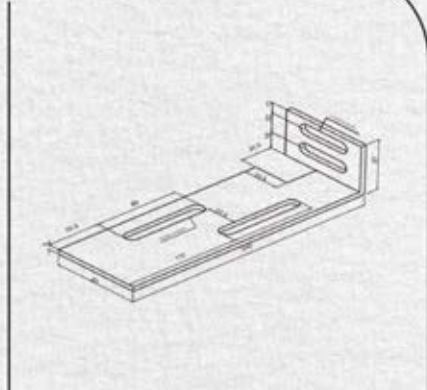
**2MC056**



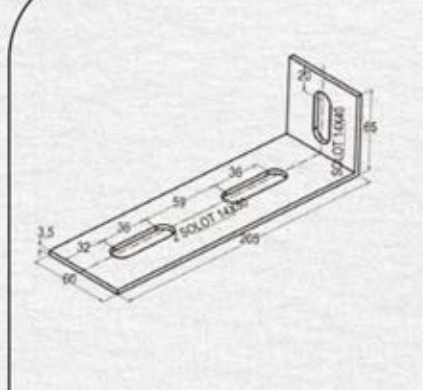
**2MC057**



**2MC058**



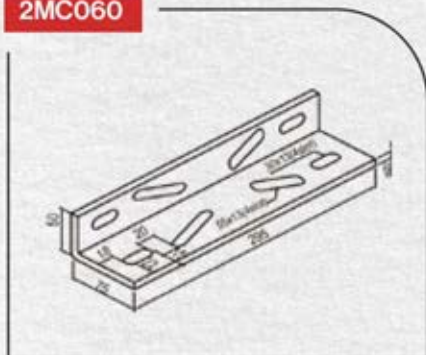
**2MC059**



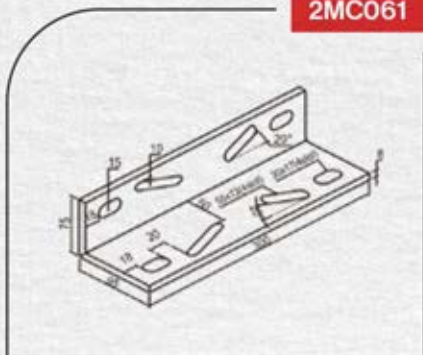


## ELEVATOR BRACKETS

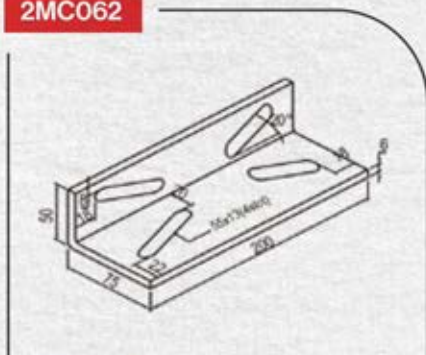
**2MC060**



**2MC061**



**2MC062**



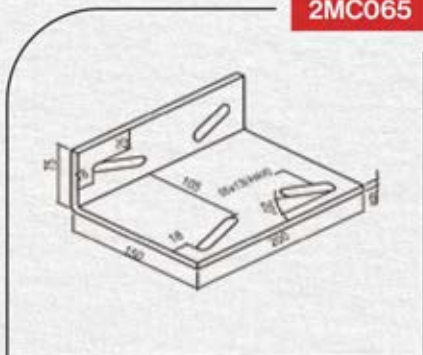
**2MC063**



**2MC064**

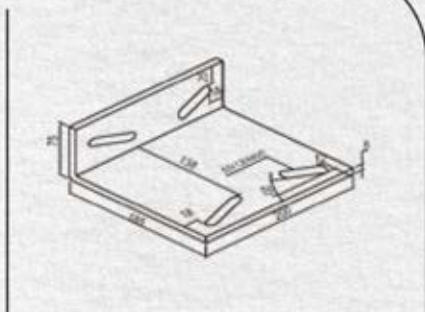


**2MC065**

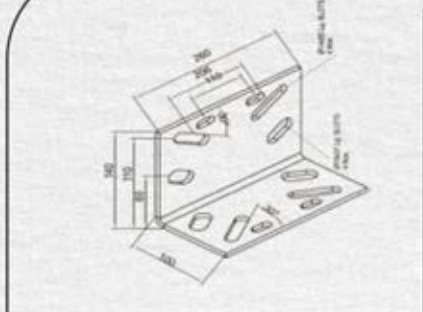


## ELEVATOR BRACKETS

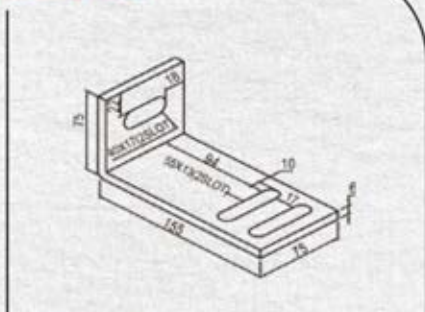
**2MC066**



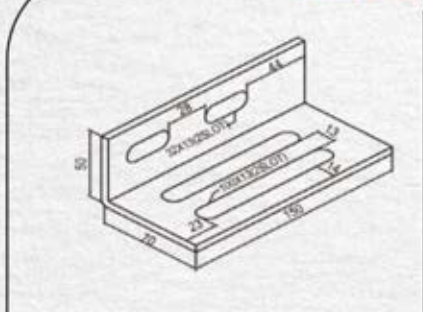
**2MC067**



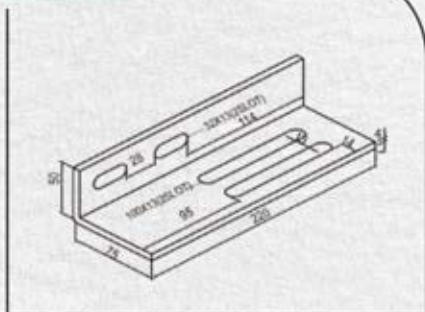
**2MC068**



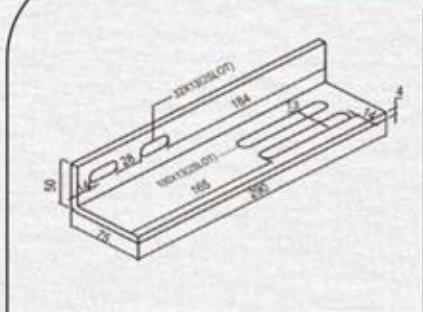
**2MC069**



**2MC070**

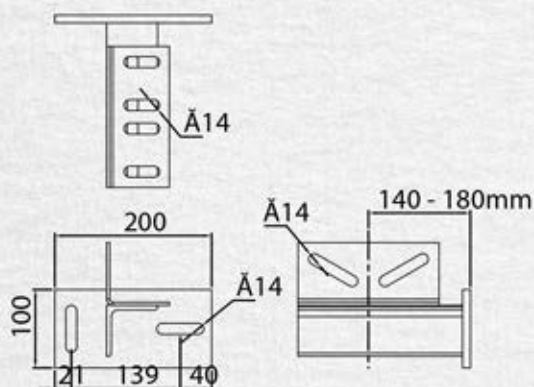


**2MC071**



## ELEVATOR BRACKETS

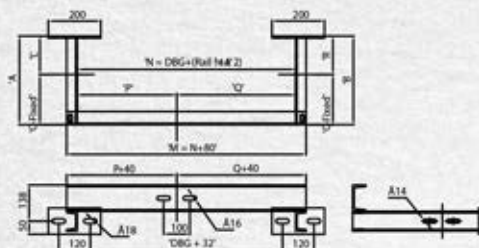
HYDRAULIC BRACKET CODE - 2MCBTK



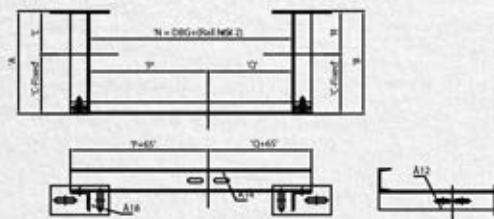


## BRACKET & ACCESSORIES

### COMBINATION BRACKET TYPE A

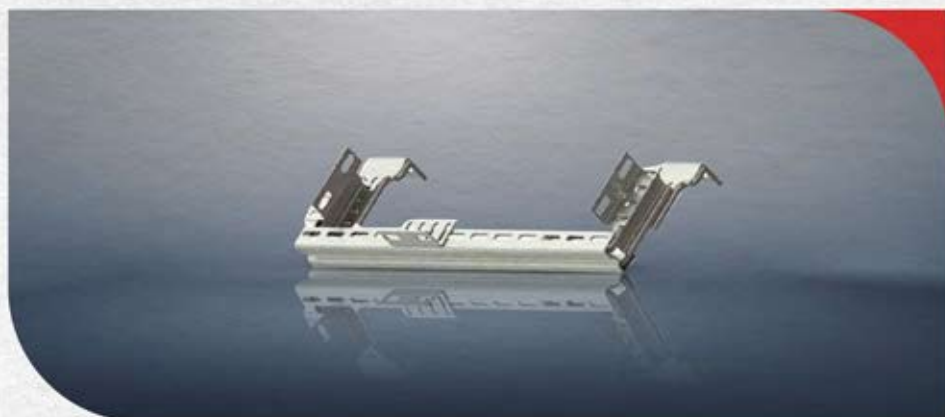


### COMBINATION BRACKET TYPE B



## BRACKET & ACCESSORIES

### ADJUSTABLE COMBINATION BRACKETS



CODE	CWT DB6	CAR READING
2MC072	700 - 1100	290 - 430
2MC073	1320 - 1650	290 - 430

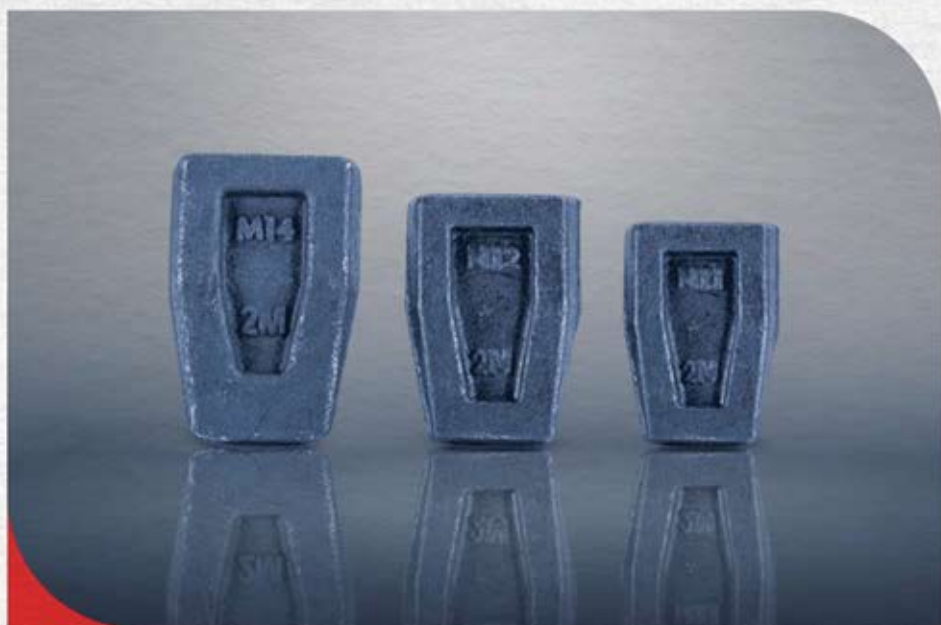
## KEYS

### CODE - SP00109



## RAIL CLIPS

CODE - FP00021

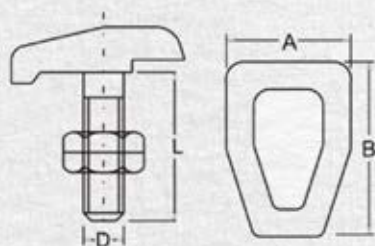


### Available Finish

• White Zinc Passivated

• Yellow Zinc Passivated

• Anodised



CODE	D mm	A mm	B mm	L mm
ERC 10	M 10	25	32	25
ERC 12	M 12	25	39	28
ERC 14	M 14	30	45	36
ERC 16	M 16	35	50	45
ERC 18	M 18	35	55	45





# Think vertical

## 2M LIFTS AND ESCALATORS

Simplify your purchases with us:  
Your one-stop solution for affordable  
elevator materials

### Mechanical Accessories



(W/r)clips

M1001



Nuts

M1002



Flat washer

M1003



Spring washer

M1004



Bolts

M1005



Door panel hanging bolt

M1006



## Mechanical Accessories



Door shoe

M1007



Anchor

M1008



Black nuts and bolts

M1009



Door strap

M1010



Door limit switch

M1011



Roller plate

M1012



Counter weight shoe 5mm

M1013



Rail bracket

M1014



Door bracket

M1015



Bracket

M1016



Cable clamp

M1017



Lock

M1018

## Mechanical Accessories



Center opening ac pm synchronous car door M1019



Center opening landing door M1020



Hydraulic buffer M1021



Tension device M1022



Governor M1023



Safety gear M1024



Safety linkage device M1025



Progressive safety gear M1026



Wire rope brake M1027



Guide Shoe M1028



Safety Gear M1029



Guide shoes M1030



## Mechanical Accessories



Elevator traction machine *M1031*



Elevator traction machine *M1032*



Belt elevator traction machine *M1033*



Permanent magnet synchronous *M1034*



Permanent magnet synchronous *M1035*



Elevator traction machine *M1036*



Escalator drive *M1037*



Guide Shoe *M1038*



Guide shoe *M1039*



Guide shoe *M1040*



Guide shoe with bracket *M1041*



Guide shoe *M1042*



## Mechanical Accessories



Escalator chain

M1043



Buffer

M1044



Motor for door operator

M1045



Clips

M1046



Guide Rail

M1047



Rope Attachment

M1048



Door Roller

M1049



Steel Rope

M1050



Pulley

M1051



Magnet

M1052



guide shoe lining

M1053



Brush

M1054



## Mechanical Accessories



Roller

M1055



Nylon roller

M1056



Nylon Roller

M1057



Nylon Roller

M1058



Nylon Roller

M1059



Nylon Roller

M1060



Door Roller

M1061



Nylon Kicking Roller

M1062



Nylon Kicking Roller

M1063



Nylon Kicking Roller

M1064



Nylon Kicking Roller

M1065



Nylon Kicking Roller

M1066





## Mechanical Accessories



Door Roller

M1067



Door Roller

M1068



Door Roller

M1069



Door Roller

M1070



Door Roller

M1071



Door Roller

M1072



Door Roller

M1073



Door Roller

M1074



Door Roller

M1075



Car Foundation Rubber

M1076



Car Steeper Rubber

M1077



Machine Foundation Rubber

M1078



# Think vertical

## 2M LIFTS AND ESCALATORS

Simplify your purchases with us:  
Your one-stop solution for affordable  
elevator materials

### Electrical Accessories



Car top box

E1001



Inspection box

E1002



Battery charger

E1003



Bottom xb2-j174

E1004



Light case silver

E1005



Light case gold

E1006

## Electrical Accessories



Switch Socket

E1007



Pvc Box 3 X 3

E1008



Lampholder

E1009



Fisher

E1010



Triangle Key

E1011



Limit Switch Xck-M

E1012



Micro Switch Cm-1308

E1013



Toggle Switch

E1014



Micro Switch Lxw5-1102

E1015



Limit Switch

E1016



Limit Switch

E1017



Limit Switch

C1018



## Electrical Accessories



Fireman Switch Board

E1019



Led Tube

E1020



Magnetic Bistable Switch No

E1021



Blower Fan Fb-9B

E1022



Pvc Packing Roll

E1023



Pvc Cable Clips

E1024



Fan

E1025



Flat Cable

E1026



Elevatoe overload measurement

E1027



PVC Tape

E1028



Wire flexible

E1029



Bistable switch

E1030

## Electrical Accessories



Door Contact

E1031



Door Contact

E1032



Door Contact

E1033



Door Contact

E1034



Door Contact

E1035



Light curtain

E1036



Monarch inverter

E1037



Photoelectric switch 1

E1038



Photoelectric switch

E1039



Proximity switch

E1040



Magnet Sensor

E1041



Door Contact

C1042



# Think vertical

## 2M LIFTS AND ESCALATORS

Simplify your purchases with us:  
Your one-stop solution for affordable  
elevator materials

### Control Panel Accessories



Auxiliary Contact

C1001



Contactor

C1002



GV2 Motor Protector

C1003



Relay

C1004



Transformer

C1005



PVC Lock

C1006



## Control Panel Accessories



PVC connector MRK

C1007



PVC connector MRK

C1008



Push button

C1009



Push button

C1010

## Control Panel Accessories



Botton Bs542

C1011



Botton Bd21

C1012



Botton BA42/31

C1013



Connection terminal

C1014



Circuit Breaker

C1015



Botton Be101

C1016



PVC Trunking

C1017



PVC Trunking

C1018



PVC Cable Tie

C1019



Lugs Fdd1.25 Rectifier

C1020



Lugs 1008

C1021



RV5.5-6 Lugs

C1022



## Control Panel Accessories

		
Resistance C1023	Din Rail C1024	Resistance C1025
		
Plug C1026	Alarm C1027	Yasakawa Inverter C1028
		
electric cabinet C1029	Legend villa elevator control C1030	diode C1031
		
Capacitor C1032	Capacitor C1033	Power supply C1034





# Think vertical

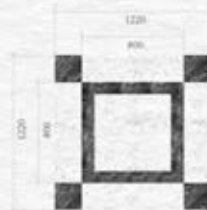
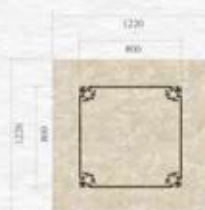
## 2M LIFTS AND ESCALATORS

Simplify your purchases with us:  
Your one-stop solution for affordable  
elevator materials

### Decoration Accessories

			
PVC Floor D1001	PVC Floor D1002	PVC Floor D1003	PVC floor D1004
			
PVC Floor D1005	PVC Floor D1006	PVC Floor D1007	

## Decoration Accessories



PVC Floor

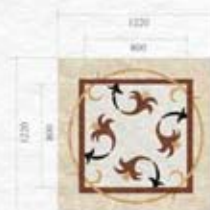
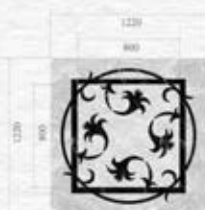
D1008

PVC Floor

D1009

PVC Floor

D1010



PVC Floor

D1011

PVC Floor

D1012

PVC Floor

D1013



PVC Floor

D1014

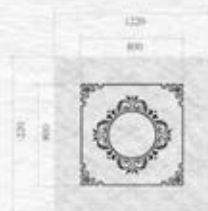
PVC Floor

D1015

PVC Floor

D1016

## Decoration Accessories



PVC Floor

D1017



PVC Floor

D1018



PVC Floor

D1019



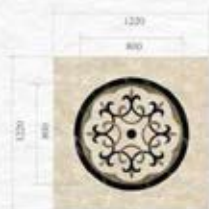
PVC Floor

D1020



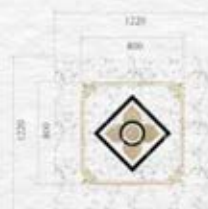
PVC Floor

D1021



PVC Floor

D1022



PVC Floor

D1023



PVC Floor

D1024



PVC Floor

D1025





## Decoration Accessories



Stainless steel Etching *D1026*



Stainless steel Etching *D1027*



Stainless steel Etching *D1028*



Stainless steel Etching *D1029*



Stainless steel Etching *D1030*



Stainless steel Etching *D1031*



Stainless steel Etching *D1032*



Stainless steel Etching *D1033*



Stainless steel Etching *D1034*



Stainless steel Etching *D1035*



Stainless steel Etching *D1036*



Stainless steel Etching *D1037*

## Decoration Accessories



Stainless steel Etching *D1038*



Stainless steel Etching *D1039*



Stainless steel Etching *D1040*



Stainless steel Etching *D1041*



Stainless steel Etching *D1042*



Stainless steel Etching *D1043*



Stainless steel Etching *D1044*



Stainless steel Etching *D1045*



Stainless steel Etching *D1046*



Stainless steel *D1047*



Stainless steel *D1048*



stainless steel laser sheet *D1049*



## Decoration Accessories



Stainless Steel antique color D1050



Stainless Steel antique color D1051



stainless steel vibration D1052



Stainless Steel antique color D1053



stainless steel hairline D1054



stainless steel hairline D1055



stainless steel hairline D1056



stainless steel hairline D1057



stainless steel lamination D1058



stainless steel lamination D1059



stainless steel lamination D1060



stainless steel lamination D1061



## Decoration Accessories



Stainless steel

D1062

Stainless steel

D1063

Stainless steel

D1064



Stainless steel

D1065

Stainless steel

D1066

Stainless steel

D1067



Stainless steel D1068

Stainless steel D1069

Stainless steel D1070

Stainless steel D1071

Stainless steel D1072

Stainless steel D1073



Stainless steel D1074

Stainless steel D1075

Stainless steel D1076

Stainless steel D1077

Stainless steel D1078

Stainless steel D1079

## Decoration Accessories



Stainless steel D1080



Stainless steel D1081



Stainless steel D1082



Stainless steel D1083



Stainless steel D1084



Stainless steel D1085



Stainless steel D1086



Stainless steel D1087



Stainless steel D1088



Stainless steel D1089



Stainless steel D1090



Stainless steel D1091



Stainless steel D1092



Stainless steel D1093



Stainless steel D1094



Stainless steel D1095



Stainless steel D1096



Stainless steel D1097



Stainless steel D1098



Stainless steel D1099



Stainless steel D1100



Stainless steel D1101



Stainless steel D1102



Stainless steel D1103



## Decoration Accessories



Handrail

D1104



Handrail

D1105



Handrail

D1106



Handrail

D1107



Handrail

D1108



Handrail

D1109



Handrail

D1110



Handrail

D1111



Handrail

D1112



Handrail

D1113



Handrail

D1114



Handrail

D1115





# Think Vertical

**2M Lifts & Escalators Pvt Ltd.**

P.O.BOX:7 BLDG NO: 5/431, Mattoor, Cochin, India-683574

2M Central: +91 9946 221 223 | Telfax: +91 484 2464983

[www.2mholding.com](http://www.2mholding.com)

